



A short manual for installation and operation

1. Install and activate RyngDyng App

The RyngDyng App controls RyngDyng devices. Install the app on your personal devices using this link:



Link the app with your personal account in the server www.archery-analytics.com in order to activate the app. A detailed description on how to achieve that is provided through QR Code B below.

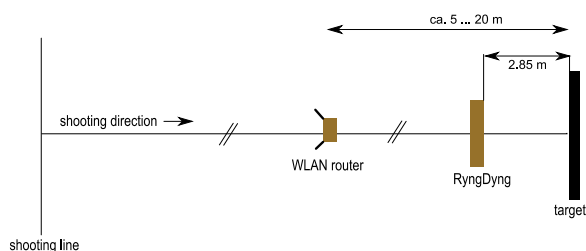
2. Power on the Wi-Fi router

First, connect the Wi-Fi router with a USB power pack (power supply). As soon as the Wi-Fi is up and running a red LED lights up.

3. Positioning of RyngDyng

Place RyngDyng at a distance of 3 m (= 3.3 yd. = 3 x length of case) on the ground. The distance is measured between the case and the foot point of the target center.

If the shooting distance is over 50 m (55 yd.), you can extend the reach of the Wi-Fi network if you place the router about 15 m (16 yd.) from RyngDyng and in direction to the shooting line. For a maximum reach, place the router 1 – 2 m (3-6 yd.) above ground.



4. Power supply

Now you can power on RD600 by connecting the red cable with the USB charger or with a USB-C power bank. The RD720 has got a dedicated power supply. During boot up, RyngDyng will automatically connect to the RyngDyng Wi-Fi network.

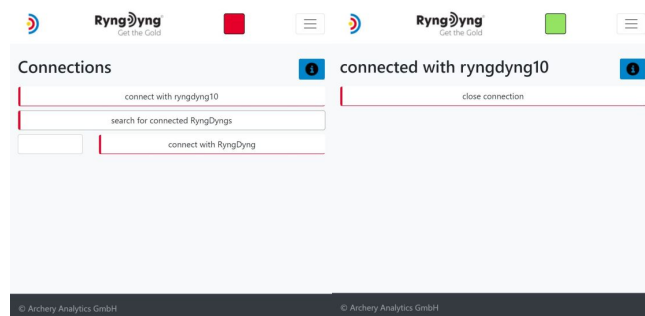
5. Launch RyngDyng App

Connect your device (mobile/tablet/PC) with the RyngDyng Wi-Fi network (SSID: RyngDyng) und start the RyngDyng App.

6. Connect RyngDyng App and RyngDyng

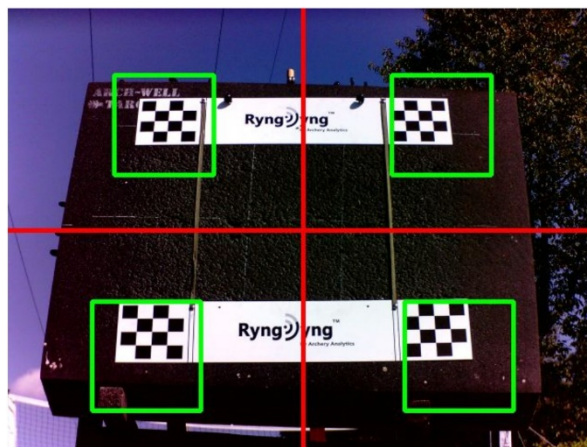
In the app, go to page [Connections]. RyngDyngs connected to the network will be listed there. If not, try the button [search for connected RyngDyngs].

Press the button [connect with ryngdyngxy]. As soon as the connection is established, the indicator turns from red to green:



7. Aligning RyngDyng

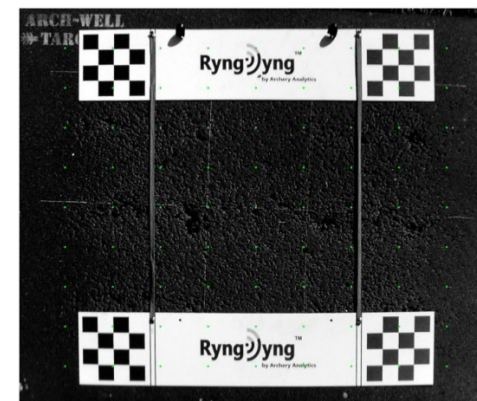
The RyngDyng App provides test images to enable proper alignment [calibrations -> test image]. Align the RyngDyng case in such a way that the red hair cross points to the center of the target and the red lines appear horizontal and vertical respectively. Turn the adjustable stands if necessary. It is very important to provide for a solid stand. On grass, better use a wooden board or stone plates to place RyngDyng on.



8. Chessboard Calibration

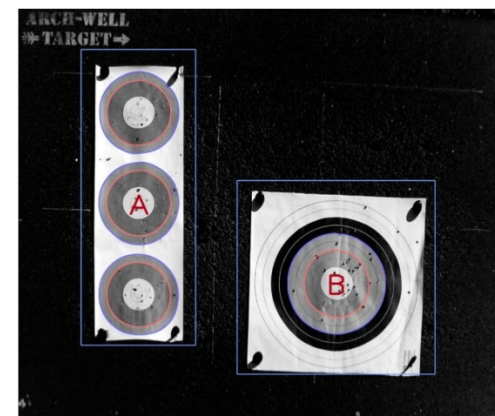
The chessboard stripes are pinned onto the target horizontally. The printed marks support the vertical adjustment of the bands. The center of the target should have the same distance to all 4 chessboards.

On the page [Chessboard calibration], select and press the button that fits the size of the target. The response image shows the result of the calibration as below:



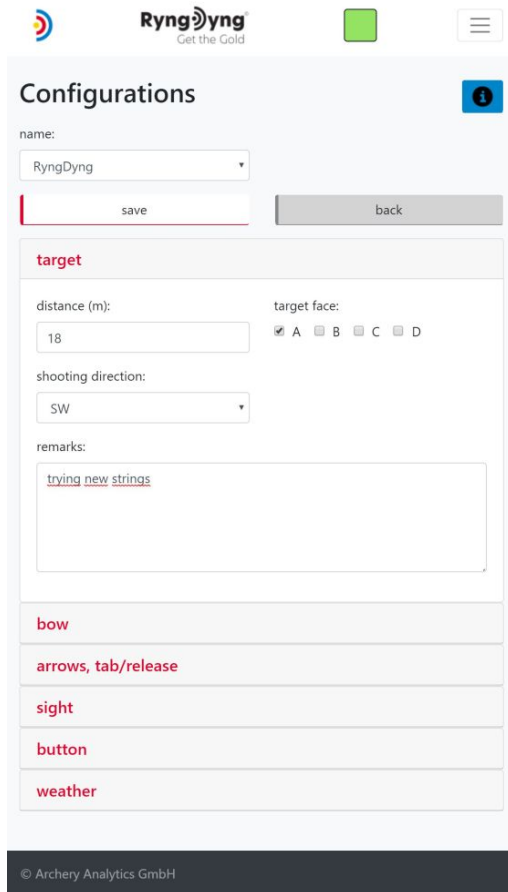
9. Target face recognition

Remove the chessboard stripes and put the target faces on. Press the button [recognize target faces]. All target faces will be measured automatically. The result is presented in the control image returned. Every recognized target has got one or mere letters:



10. Assign archers

The RyngDyng App offers plenty of parameters that can be stored together with the recorded arrows: material being used, data on your bow settings, weather data, etc. In any case, assign the different archers present in your app to the various target face letters and enter the shooting distance:



Configurations

name:

target

distance (m): target face: A B C D

shooting direction:

remarks:

bow

arrows, tab/release

sight

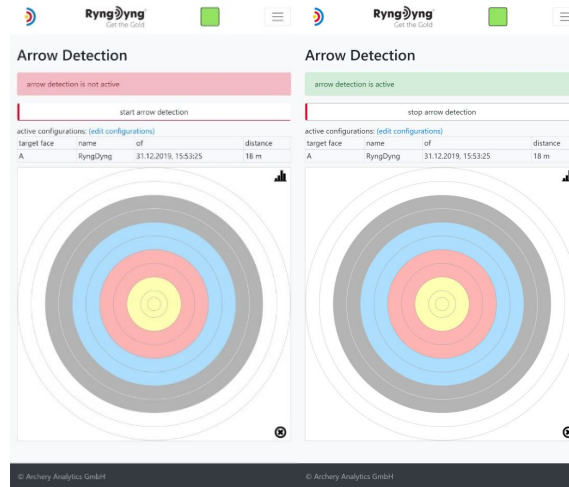
button

weather

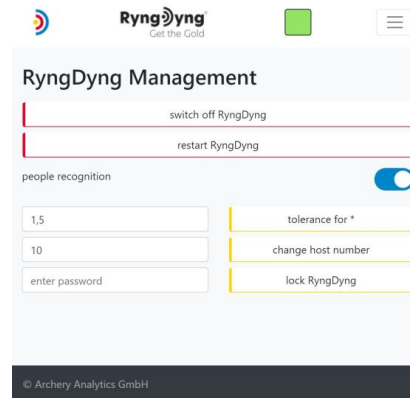
© Archery Analytics GmbH

11. Start arrow detection

Start the detection and scoring of arrows by pressing the button [start detection]. This page also provides the live view to display measured arrow positions within seconds.



12. Power off RyngDyng



RyngDyng Management

people recognition

tolerance for *

change host number

lock RyngDyng

© Archery Analytics GmbH

Please always shut down RyngDyng properly before disconnecting from the power supply. Go to page [system -> RyngDyng] and press button [switch off RyngDyng]:

After about 30 seconds, RyngDyng has been powered down and can be disconnected from the power supply

13. Useful links

A: Homepage of Archery Analytics



B: Manual for registration and activation



C: Download RyngDyng App



D: Detailed information for RyngDyng App



D: Manuals, documentation and further material for RyngDyng



E: User forum for questions and exchanging ideas

